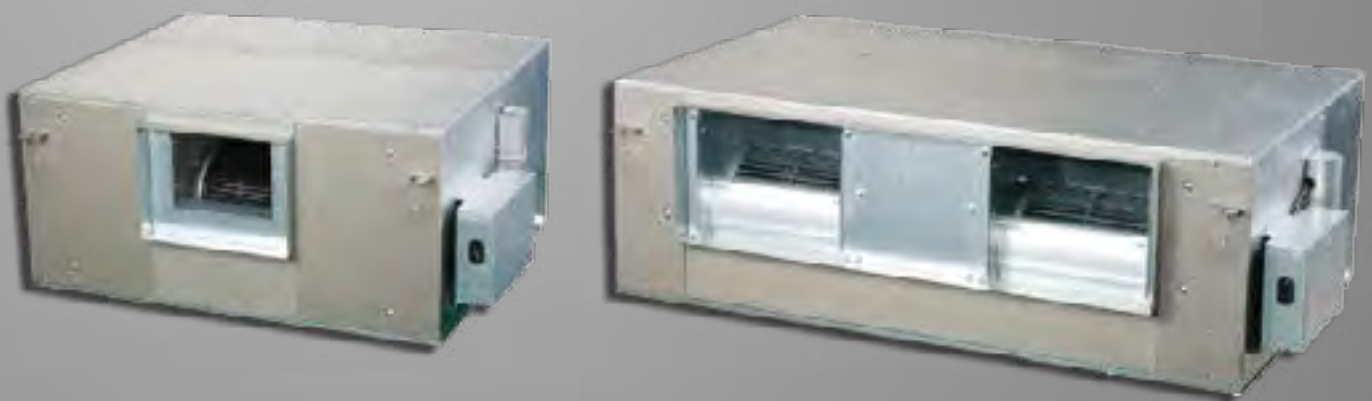


FAN COIL UNIT

(HIGH STATIC CONCEALED TYPE)



TRUST AIR CONDITIONING EQUIPMENT CO.
Prepared By: Engineering & R & D Department.

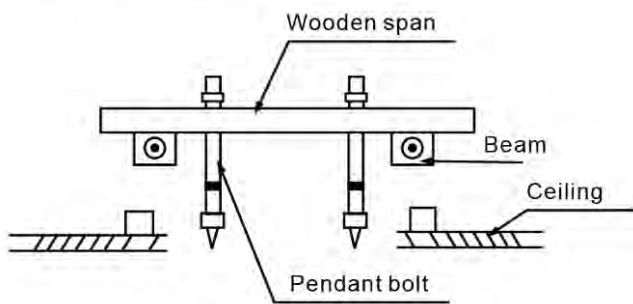
1. Installation

1.1 Installing the Fan Coil Unit

- Precautions before installation.
 - Decide the correct way of conveying the equipment.
 - Try to transport this equipment with the original package.
 - If the air conditioner needs to be installed on a metal part of the building, electric insulation must be performed, and the installation must meet the relevant technical standards of electric devices.
- Install F10 pendant bolts (4 bolts)
 - The intervals of the pendant bolts are shown in the following figure.
 - Use the F10 pendant bolts.
 - The treatment of the ceiling varies between buildings. For detailed measures, negotiate with the construction and fit-out staff.
- Scope of dismantling the ceiling...Please keep the ceiling horizontal. Reinforce the beams and girders of the ceiling lest vibration of the ceiling.
- Cut off the beams and girders of the ceiling.
- Reinforce the cut-off part, beams and girders of the ceiling.
 - After the main body is suspended, work on the pipes and wires in the ceiling. Decide the lead-out direction of the pipes after selecting the installation site. Especially, in a circumstance where a ceiling is available, extend the refrigerant pipe; drain pipe, indoor/outdoor connection wires and wire controller lines to the connection position before suspending the unit.
 - Procedure of installing the pendant bolts.

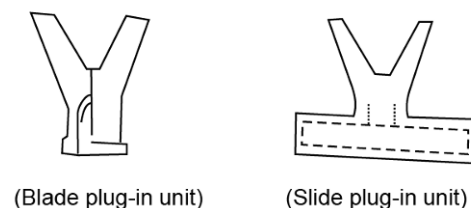
Wooden structure

Put rectangular sticks across the beams, and set pendant bolts.



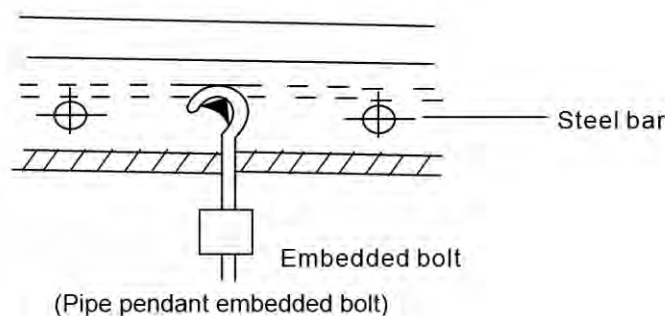
New concrete roughcast

Set it with embedded bushes or embedded bolts.



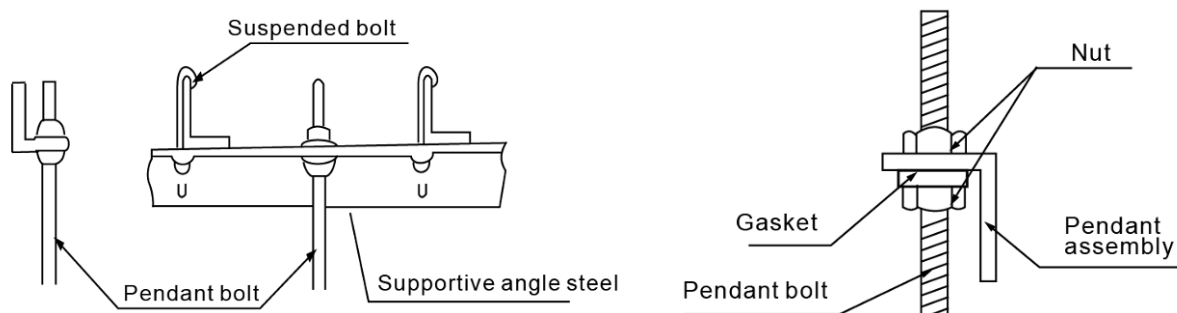
Old concrete roughcast

Use embedded bolts, embedded pulling plugs, and embedded stick harness.



Steel beam and girder structure

Set and use supportive angle steel.



■ Suspending the indoor unit

- Use tools such as pulleys to hoist the indoor unit to the pendant bolt.
- Use tools such as gradient to settle the indoor unit horizontally. Lack of horizontality may cause water leak.

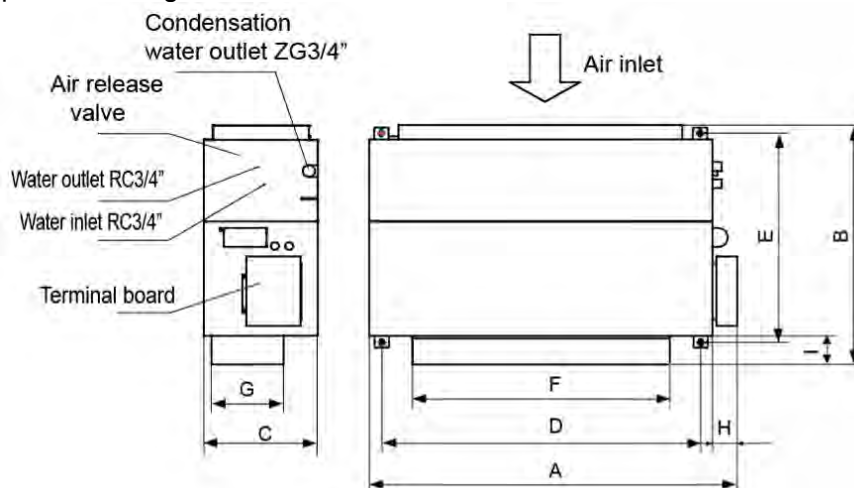
■ Connect the duct

The external static pressure is 70Pa or 100Pa, and the duct length is determined according to this parameter.

■ Install the wire control switch

For installation of the wire control switch, see the installation manual of the wire controller.

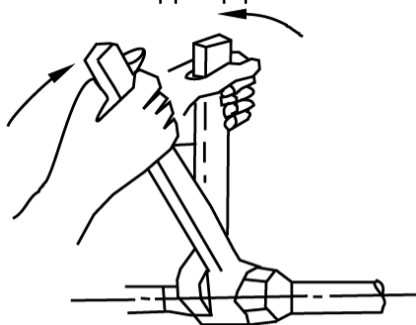
■ Sample unit specification figure:



Model Size	TMFCDH-800 TMFCDH-1000 TMFCDH-1200 TMFCDH-1400	TMFCDH-800E TMFCDH-1000E TMFCDH-1200E TMFCDH-1400E	TMFCDH-1600 TMFCDH-1800 TMFCDH-2200	TMFCDH-1600E TMFCDH-1800E TMFCDH-2200E
A	946	946	1290	1290
B	816	876	809	874
C	400	400	400	400
D	778	778	1118	1118
E	767	767	765	765
F	306	306	900	900
G	219	219	249	249
H	88	88	88	88
I	37	97	39	104

1.2 Pipes Connection

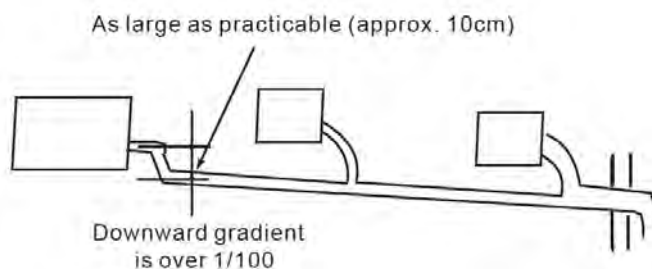
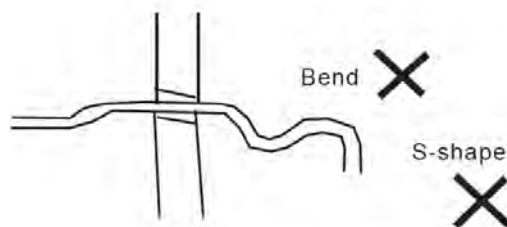
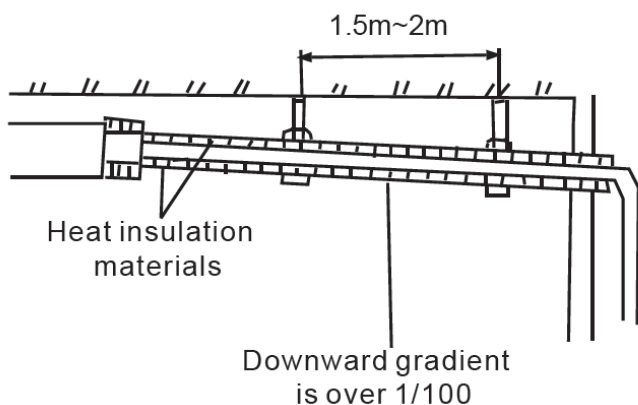
- With air release valve, the other side is water inlet pipe.
- When connect water collector, set the tightening torque to 6180~7540N.cm(630~770kgf.cm), and use a spanner to tighten it as shown in Fig..
- The diameter of connective junction in water inlet pipe and water outlet pipe is RC3/4 taper pipe thread inside.
- The diameter of condensate pipe is ZG3/4 taper pipe thread outside.



1.3 Installing Drainage Pipe

Cautions:

- Be sure to perform heat insulation for the drain pipe of the indoor unit. Otherwise, condensate will occur. The joint of the indoor unit should also undergo heat insulation treatment.
- When performing the en suite connection, use the rigid PVC binder, and make sure that no leak exists.
- Same as the joint of the indoor unit. Be careful not to apply force at the pipe side of the indoor unit.
- The downward gradient of the drain pipe should be higher than (1/100), without bend in the middle.
- The widthwise stretch of the drain pipe should be with 1in 2110m. If the drain pipe is long, set up brackets to support it.
- The centralized pipes should be distributed against the figure shown on the right side.



- Drain test
 - Before the test, ensure that the drain pipes are smooth and the adapters are sealed.
 - Newly built rooms should undergo the drain test before the ceiling is laid.

1.4 Wiring

Fan coil units model	Name of cable	Cable Qty.	Specification(Optional)	Note
TMFCDH-800	Main power cord	1	RVV-300/500 3×2.5 mm ²	Owner purchase it optionally
TMFCDH-1000	Controller power cord	1	RVV-300/500 3×2.0 mm ²	Owner purchase it optionally
TMFCDH-1200	Control wire	1	RVV-300/500 5×1.5 mm ²	Owner purchase it optionally
TMFCDH-1400				
TMFCDH-1600				
TMFCDH-1800				
TMFCDH-2200				
TMFCDH-800E	Main power cord	1	RVV-300/500 3×3.3 mm ²	Owner purchase it optionally
TMFCDH-1000E	Controller power cord	1	RVV-300/500 3×2.0 mm ²	Owner purchase it optionally
TMFCDH-1200E	Control wire	1	RVV-300/500 5×1.5 mm ²	Owner purchase it optionally
TMFCDH-1400E				
TMFCDH-1600E	Main power cord	1	RVV-300/500 3×6.0 mm ²	Owner purchase it optionally
TMFCDH-1800E	Controller power cord	1	RVV-300/500 3×2.0 mm ²	Owner purchase it optionally
TMFCDH-2200E	Control wire	1	RVV-300/500 5×1.5 mm ²	Owner purchase it optionally



Air Conditioning Systems

Cooling & Heating

TRUST AIR-CONDITIONING EQUIPMENT CO.

Shiraz office: 8 th floor, Alvand Blog., Dostan St.,
Moaliabad Ave., SHIRAZ, IRAN., Post code: 71877-14446

Tel.: +98-71-36341070

Fax.: +98-71-36341094

Tehran office: No. 19- koohe nour St.- Motahhari St.-

TEHRAN, IRAN., Post code: 15876-73111

Tel.: +98-21-89389

Fax.: +98-21-88541903

Ahwaz office: No. 309- Kaveh St.- AHWAZ, IRAN., Post code: 61939-47911

Tel.: +98-61-32230647-8

Fax.: +98-61-32230647

E-mail: info@trustacs.com

Web site: <http://www.trustacs.com>

پروژه پرتو در اولین جشنواره بین المللی
برترین نام و نشان های تجاری ایران

